

## **Historic, Archive Document**

Do not assume content reflects current scientific knowledge, policies, or practices.



# Wood's Special Prices for Market Gardeners and Truckers

These prices are for the exclusive use of Market Gardeners and Truckers who, on account of the large quantities of seeds they require, are entitled to these special prices.

Prices quoted effective January 1, 1953, are subject to change without notice. All prices are F.O.B. Richmond, Va. If to be sent by parcel post, postage must be added to the remittance.

**TERMS** are net cash with the order unless you have an account with us or can give us satisfactory references.

**WOOD'S SEEDS ARE TESTED** And we know that they will grow before they are sent out. Even then they occasionally do not come up, due to causes over which we have no control, such as covering too deeply or not deeply enough; too little or too much moisture, cold weather, insects or a crust through which the sprouts cannot penetrate, etc.; therefore, **T. W. Wood & Sons** warrant to the extent of the purchase price that Seeds, Bulbs and Plants sold are as described on the container, within recognized tolerances. We give no other or further warranty, express or implied.



A field of Stringless Green Pod Beans at Our Growing Station in Idaho

## GARDEN BEANS or SNAPS Bags = 120 lbs.

Idaho grown and field inspected by the Idaho Crop Improvement Association, Inc.

GREEN PODDED VARIETIES	25 to 49 lbs.	50 to 119 lbs.	Larger lots
Wade	.36	.34	.32
Stringless Red Valentine	.29	.27	.25
Stringless Black Valentine	.26	.24	.22
Contender	.27	.25	.23
Tendergreen Stringless Green Pod	.28	.27	.25
Tenderlong 15	.29	.27	.25
Dixie White Stringless	.28	.26	.24
Top Crop Stringless Green Pod	.30	.28	.26
Full Measure Stringless Green Pod	.29	.27	.25
Bountiful or Early Six Weeks	.29	.27	.25
Giant Stringless Green Pod	.27	.25	.23
Burpee's Stringless Green Pod	.25	.23	.21
Landredth's Stringless Green Pod	.25	.23	.21
Sulphur or Brimstone	.30	.28	.26
Tennessee Green Pod	.29	.27	.25
White Half Runner	.31	.29	.27
Ruby Dwarf Horticultural	.30	.28	.26
Taylor Long Pod Horticultural	.33	.31	.29
Red Kidney	.29	.27	.25

WAX PODDED BEANS—Idaho Grown	25 to 49 lbs.	50 to 119 lbs.	Larger lots
Bountiful Wax	.28	.26	.24
Cherokee or Valentine Wax	.27	.25	.23
Top Notch Golden Wax	.31	.29	.27
Pencil Pod Black Wax	.29	.27	.25
Prolific Black Wax	.29	.27	.25
Surecrop Stringless Wax	.28	.26	.24

POLE LIMA BEANS	25 to 49 lbs.	50 to 119 lbs.	Larger lots
Wood's Improved Pole Lima	.26	.24	.22
Small Lima or Sieva	.24	.22	.20
Florida Speckled or Calico Pole Lima	.26	.24	.22
Giant Speckled Pole Lima	.29	.27	.25
Carpinteria Pole Lima	.30	.28	.26
Large White Pole Lima	.30	.28	.26
King of the Garden Lima	.30	.28	.26

## GARDEN BEANS

POLE or CORNFIELD BEANS	25 to 49 lbs.	50 to 119 lbs.	Larger lots
Kentucky Wonder, Brown Seeded	.27	.25	.23
White Kentucky Wonder No. 191	.29	.27	.25
October or Horticultural Wren's Egg	.28	.26	.24
Nancy Davis or Striped Creaseback	.29	.27	.25
White Creaseback or Fat Horse	.28	.26	.24
Red Speckled Cutshort or Cornfield	.28	.26	.24
Genuine Cornfield	.29	.27	.25
McCaslan	.28	.26	.24
Missouri Wonder	.29	.27	.25
Kentucky Wonder Wax	.41	.39	.37
Scarlet Runners	.36	.34	.32
Ideal Market	.29	.27	.25

## BUSH LIMA BEANS

BUSH LIMA BEANS	25 to 49 lbs.	50 to 119 lbs.	Larger lots
Wood's Prolific Bush Lima	.25	.23	.21
Henderson's Bush Lima	.24	.22	.20
Therogreen Green Seeded Henderson	.26	.24	.22
Jackson Wonder Bush Lima (Speckled)	.24	.22	.20
Peerless Bush Lima	.31	.29	.27
Fordhook Bush Lima 242	.32	.30	.28
Burpee's Improved Bush Lima	.30	.28	.26

## GARDEN CORN Bags = 112 lbs.

EARLY and EXTRA EARLY VARIETIES	25 to 49 lbs.	50 to 119 lbs.	Larger lots
Bland's Extra Early	.19	.17	.15
Extra Early Adams	.18	.16	.14
Ideal or Big Early Adams	.18	.16	.14
Trucker's Favorite	.18	.16	.14
Norfolk Market	.18	.16	.14
Wood's Hybrid Trucker's Favorite	.24	.22	.20

## SWEET or SUGAR VARIETIES—Bags = 100 lbs.

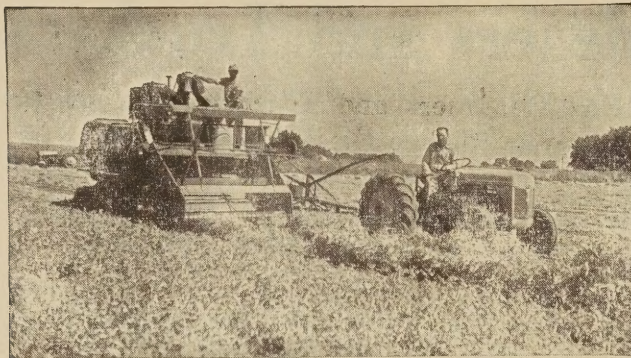
HYBRID CORNS	25 to 49 lbs.	50 to 99 lbs.	Larger lots
Hybrid Stowell's Evergreen	.38	.36	.34
Marcross 39 Hybrid	.34	.32	.30
Iochief Hybrid	.43	.41	.39
Aristogold Bantam Evergreen	.52	.50	.48
Ioana Hybrid	.34	.32	.30
Golden Cross Bantam Hybrid	.38	.36	.34
Hybrid Country Gentleman	.40	.38	.36

## OPEN POLLINATED

OPEN POLLINATED	25 to 49 lbs.	50 to 99 lbs.	Larger lots
Golden or Bantam Evergreen	.24	.22	.20
Golden Bantam	.24	.22	.20
Golden Giant	.24	.22	.20
Black Mexican	.26	.24	.22
Country Gentleman	.24	.22	.20
Stowell's Evergreen	.24	.22	.20

## POP CORN

POP CORN	25 to 49 lbs.	50 to 99 lbs.	Larger lots
Purdue 31 Hybrid	.44	.42	.40
White Rice	.22	.20	.18
South American	.24	.22	.20



Harvesting a field of Thomas Laxton Peas at our Growing Station in Idaho

**GARDEN PEAS** Bags = 120 lbs. 25 to 49 lbs. 50 to 119 lbs. Larger lots

**SMOOTH SEEDED VARIETIES:**

Wood's Pedigree Extra Early	.18	.16	.14
First and Best	.18	.16	.14
Extra Early Alaska Wilt-Resistant	.16	.14	.12
Early Bird or Laxton's Superb	.24	.22	.20
Large White Marrowfat	.22	.20	.18
Large Podded Alaska (Ameer)	—Sold Out		

**WRINKLE SEEDED EARLY**

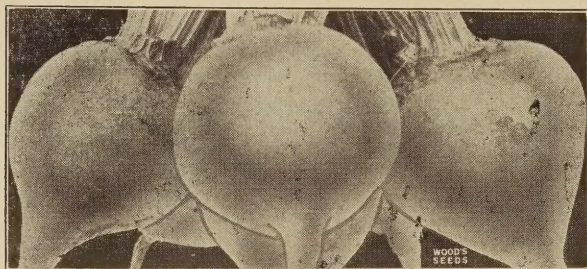
Thomas Laxton	.22	.20	.18
Little Marvel	.24	.22	.20
Laxtonian or Hundredfold	.26	.24	.22
Nott's Excelsior	.23	.21	.19
Laxton's Progress	.26	.24	.22
Blue Bantam	.25	.23	.21
Premium Gem or McLean's Little Gem	.23	.21	.19
American Wonder	.23	.21	.19
Bliss Everbearing	.23	.21	.19

**WRINKLE SEEDED, LATE**

Dwarf Telephone or Daisy	.24	.22	.20
Alderman	.23	.21	.19
Dark Green Telephone (Tall)	.23	.21	.19
Champion of England	.23	.21	.19

**SUGAR or EDIBLE PODDED**

Wood's Mammoth Luscious Sugar	.26	.24	.22
Dwarf Gray Sugar	.21	.19	.17



**BEETS**

	2 to 4-lb. Lots	5 to 9-lb. Lots	Larger Lots
Crosby's Egyptian	1.00	.95	.90
Detroit Dark Red	1.05	1.00	.95
Wood's Early Wonder	1.00	.95	.90
Wood's Crimson Globe	1.00	.95	.90
Improved Early Blood	1.00	.95	.90
Extra Early Egyptian	1.00	.95	.90
Swiss Chard or Spinach Beet	.90	.85	.80

**STOCK BEETS or MANGELS**

Mammoth Prize Long Red	.75	.70	.67
Silesian Sugar	.75	.70	.67
Golden Tankard	.75	.70	.67

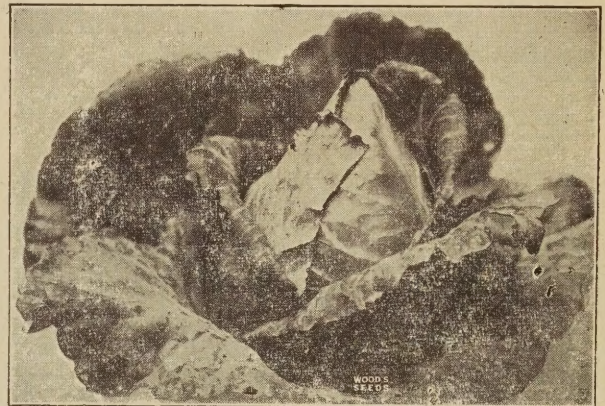
**ASPARAGUS**

	1 to 4-lb. Lots	5 to 9-lb. Lots	Larger Lots
Washington Rust Resistant	\$1.75	\$1.60	\$1.50

**ASPARAGUS ROOTS**—Washington. 1-year-old roots, \$21.00 per 1,000.

**BROCCOLI**

Italian Salad	1.00	.95	.90
Calabrese Green Sprouting	2.00	1.90	1.80
<b>BRUSSELS SPROUTS</b> —Long Island.	3.00	2.90	2.70



**CABBAGE**

	1 to 4-lb. Lots	5 to 9-lb. Lots	Larger Lots
--	-----------------	-----------------	-------------

**EARLY VARIETIES:**

Copenhagen Market	1.65	1.55	1.50
Selected Early Jersey Wakefield	1.80	1.70	1.65
Charleston Wakefield	1.75	1.65	1.60

**EARLY and SECOND EARLY VARIETIES**

Early Flat Dutch	1.65	1.55	1.50
All Head Early	1.65	1.55	1.50
All Seasons	1.65	1.55	1.50
Ferry's Round Dutch	2.15	2.05	2.00

**LATE or WINTER VARIETIES**

Surehead	1.65	1.55	1.50
Large Late Drumhead	1.65	1.55	1.50
Large Late Flat Dutch	1.65	1.55	1.50
Wood's P.H. Late Flat Dutch	1.95	1.85	1.80
Short Stem Danish Ballhead	2.25	2.15	2.10
Chieftain Drumhead Savoy	2.15	2.05	2.00
Mammoth Rock Red	3.00	2.90	2.85

**YELLOW RESISTANT VARIETIES**

Marion Market	1.90	1.80	1.75
Wisconsin All Season	2.50	2.40	2.35

**CHINESE PETAISI**—Wong Bok .... 1.45 1.40 1.35

**CARROT**

	2 to 4-lb. Lots	5 to 9-lb. Lots	Larger Lots
--	-----------------	-----------------	-------------

Imperator	1.20	1.15	1.10
Wood's Scarlet Intermediate	1.40	1.35	1.30
Nantes Improved Coreless	1.40	1.35	1.30
Half Long Danvers	1.15	1.10	1.05
Red Cored Chantenay	1.15	1.10	1.05
Improved Long Orange	1.20	1.15	1.10
Large White Belgium	1.20	1.15	1.10

**CAULIFLOWER**

	Oz.	¼-lb.	1 to 4 lbs.
Danish Giant (Dry Weather)	1.00	3.50	12.00
Earliest Snowball	1.00	3.00	10.00

**CELERY**

	1 to 4-lb. Lots	5 to 9-lb. Lots	Larger Lots
Giant Pascal	4.00	3.80	3.70
Improved White Plume	4.00	3.80	3.70
Golden Self Blanching	5.00	4.80	4.70

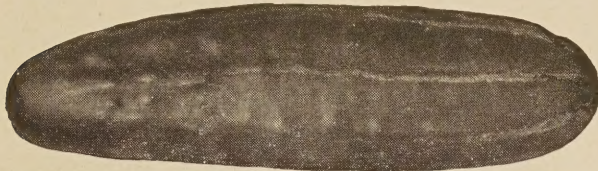
**CELERIAC**—Large Smooth Prague.. 4.50 4.30 4.15

**COLLARDS**

	2 to 4-lb. Lots	5 to 9-lb. Lots	Larger Lots
Vates .....	1.50	1.45	1.42
North Carolina Short Stem .....	1.05	1.00	.97
White or Cabbage .....	1.00	.95	.92
Georgia or Southern .....	1.00	.95	.92
<b>CORN SALAD</b> .....	2.00	1.95	1.90

**CRESS**

Water .....	6.50	6.25	....
Curled or Pepper Grass .....	1.10	1.05	1.00
Upland Cress .....	1.65	1.55	1.50



**CUCUMBER**

	2 to 4-lb. Lots	5 to 9-lb. Lots	Larger Lots
Early Surecrop Hybrid, Oz., \$3.40; 1/4 lb., \$12.00; \$42.00 lb.			
Wood's Earligreen .....	1.75	1.70	1.65
Straight 8 .....	1.60	1.55	1.50
Palmetto .....	2.30	2.25	2.20
Early Fortune .....	1.40	1.35	1.30
Early White Spine .....	1.40	1.35	1.30
A & C or Colorado .....	1.55	1.50	1.45
Improved Long Green .....	1.70	1.65	1.60
Marketer .....	1.75	1.70	1.65
White Wonder .....	1.50	1.45	1.40
Green Prolific or Early Short Stem..	1.45	1.40	1.35
Early Green Cluster .....	1.40	1.35	1.30
Boston Pickling .....	1.40	1.35	1.30
National Pickling .....	1.40	1.35	1.30
Gherkin or Burr, for pickles .....	1.85	1.80	1.75

**EGG PLANT**

Black Beauty .....	5.25	5.10	5.00
Florida High Bush .....	5.50	5.35	5.25

**ENDIVE**

Green Curled .....	1.15	1.10	1.05
Full Hearted Batavian or Escarole....	1.15	1.10	1.05

**HORSE RADISH ROOTS**—50c. per dozen; 50 for \$1.25; \$2.00 per 100.

**KALE or BORECOLE**

	2 to 4-lb. Lots	5 to 9-lb. Lots	Larger Lots
Early Curled Siberian .....	1.00	.95	.90
Dwarf Blue Scotch or Norfolk .....	1.40	1.35	1.30
Spring Kale or Spring Sprouts .....	.40	.38	.37

**KOHL RABI**, Early White Vienna... 2.25 2.15 2.10

**LEEK**—Large Flag .....

3.65	3.55	3.50
------	------	------

**LETTUCE**

	2 to 4-lb. Lots	5 to 9-lb. Lots	Larger Lots
<b>HEADING VARIETIES</b>			
Wood's Cabbage .....	1.75	1.70	1.65
Improved Big Boston .....	1.45	1.40	1.35
Great Lakes .....	4.00	3.95	3.90
Iceberg .....	1.90	1.80	1.75
Imperial No. 44 .....	2.75	2.70	2.65
Summer Allheart .....	1.65	1.60	1.55
Crisp as Ice .....	2.75	2.70	2.65
<b>LOOSE LEAF VARIETIES</b>			
Slobolt .....	2.75	2.70	2.65
Early Curled Simpson or Silecia....	1.45	1.40	1.35
Black Seeded Simpson .....	1.45	1.40	1.35
Grand Rapids .....	1.45	1.40	1.35
Cos or Romain, dark green .....	1.45	1.40	1.35
Chicken Lettuce .....	1.40	1.35	1.30
Salad Bowl .....	4.75	4.65	4.60



**CANTALOUPE or MUSKMELON**

	2 to 4-lb. Lots	5 to 9-lb. Lots	Larger Lots
Extra Early Hanover .....	2.00	1.95	1.90
Rocky Ford Netted Gem .....	1.60	1.55	1.50
Improved Rocky Ford, Jr. ....	2.00	1.95	1.90
Pride of Wisconsin .....	1.60	1.55	1.50
Hearts of Gold .....	1.60	1.55	1.50
Hale's Best No. 36 .....	1.60	1.55	1.50
Hale's Best, Jumbo Strain .....	1.60	1.55	1.50
Gold Lined Rocky Ford .....	1.65	1.60	1.55
Large Hackensack or Turk's Cap....	1.60	1.55	1.50
Hollybrook Luscious .....	2.90	2.80	2.75
Honey Dew .....	1.65	1.60	1.55
Banana .....	1.75	1.70	1.65

**WATERMELON**

New Hampshire Midget .....	3.25	3.20	3.15
Congo 46-40 .....	2.45	2.40	2.35
Dixie or Cuban Queen, Wilt Resistant	1.95	1.90	1.85
Dixie or Cuban Queen .....	1.20	1.15	1.10
Improved Kleckley's Sweet .....	1.15	1.10	1.05
Irish Gray .....	1.40	1.35	1.30
Stone Mountain .....	1.20	1.15	1.10
Florida Favorite .....	1.20	1.15	1.10
Tom Watson .....	1.20	1.15	1.10
Improved Ga. or Aug. Rattlesnake...	1.20	1.15	1.10
<b>Leesburg or Wilt-Resistant Kleckley's</b>			
Sweet .....	1.40	1.35	1.30
Hawkesbury Wilt-Resistant.....	1.40	1.35	1.30
Florida Giant or Cannonball.....	1.35	1.30	1.25
Garrison or Darlington .....	2.25	2.20	2.15
Blacklee, Wilt-Resistant .....	1.50	1.40	1.35
Preserving Citron .....	1.25	1.20	1.15

**MUSTARD**

	2 to 4-lb. Lots	5 to 9-lb. Lots	Larger Lots
Old Fashion .....	1.65	1.60	1.55
Southern Giant Curled, Long Standing	1.00	.95	.91
Florida Broad Leaved .....	1.20	1.15	1.10
Chinese Broad Leaved .....	1.20	1.15	1.10
Fordhook Fancy .....	1.00	.95	.91
Tendergreen or Mustard Spinach ....	.90	.85	.81

**OKRA or GUMBO**

Dwarf Stalk Long Green .....	1.00	.96	.93
Perkins Mammoth Long Green .....	1.00	.96	.93
Clemson Spineless .....	1.15	1.11	1.08
Louisiana Green Velvet .....	.90	.86	.83
White Velvet .....	1.15	1.11	1.08

**SPECIAL PRICES FOR MARKET GARDENERS AND TRUCKERS**

<b>ONION SEED</b>	2 to 4-lb. Lots	5 to 9-lb. Lots	Larger Lots
Yellow Globe Danvers .....	2.75	2.55	2.50
Silver Skin or White Portugal .....	3.15	3.05	3.00
Prize Taker or Spanish King .....	3.25	3.15	3.10
Yellow Valencia Sweet Spanish .....	3.25	3.15	3.10
Extra Early White Pearl .....	3.15	3.05	3.00

<b>PARSLEY</b>	2 to 4-lb. Lots	5 to 9-lb. Lots	Larger Lots
Plain or Single .....	1.00	.95	.90
Champion Moss Curled .....	1.00	.95	.90
Hamburg Parsnip Rooted .....	1.00	.95	.90

<b>PARSNIP</b>	2 to 4-lb. Lots	5 to 9-lb. Lots	Larger Lots
Sugar or Hollow Crown .....	1.20	1.15	1.10

<b>PEPPER</b>	2 to 4-lb. Lots	5 to 9-lb. Lots	Larger Lots
California Wonder .....	5.50	5.15	5.00
Florida Giant .....	5.50	5.15	5.00
Large Sweet Bull Nose .....	4.30	4.00	3.85
Ruby Giant or World Beater .....	4.30	4.00	3.85
Ruby King .....	4.30	4.00	3.85
Pimento .....	5.75	5.40	5.25
Red Chili .....	4.00	3.65	3.50
Long Red Cayenne .....	4.00	3.65	3.50

<b>PUMPKIN</b>	2 to 4-lb. Lots	5 to 9-lb. Lots	Larger Lots
Virginia Mammoth .....	1.45	1.40	1.35
Sugar or Pie Pumpkin .....	1.25	1.20	1.15
Cashaw or Crookneck (Green Striped) .....	1.25	1.20	1.15
Tennessee Sweet Potato .....	1.40	1.35	1.30
Large Sweet Cheese .....	1.15	1.10	1.05
Corn Field Pumpkin .....	.95	.90	.85
King of the Mammoths .....	1.50	1.45	1.40

<b>RADISH</b>	2 to 4-lb. Lots	5 to 9-lb. Lots	Larger Lots
<b>TURNIP SHAPED</b>			
Early Red or Scarlet Turnip .....	.80	.75	.70
French Breakfast .....	.80	.75	.70
Early White Tipped Scarlet (Sparkler) .....	.80	.75	.70
Extra Early Scarlet Globe .....	.80	.75	.70

<b>LONG RADISHES</b>	2 to 4-lb. Lots	5 to 9-lb. Lots	Larger Lots
Long Scarlet Summer .....	.80	.75	.70
Long White Icicle .....	.80	.75	.70
Brightest Long Scarlet .....	.80	.75	.70

<b>WINTER VARIETIES</b>	2 to 4-lb. Lots	5 to 9-lb. Lots	Larger Lots
Rose China Winter .....	1.00	.95	.90
Long Black Spanish .....	1.00	.95	.90
Chinese or Celestial .....	1.00	.95	.90

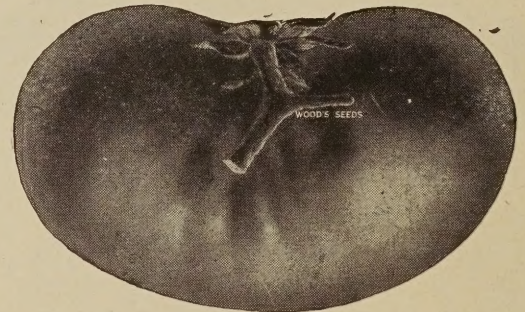
**RHUBARB** or Pie Plant ..... 2.15 2.05 2.00

**RHUBARB ROOTS**—35c. each; \$2.50 per dozen.

<b>SALSIFY</b>	2 to 4-lb. Lots	5 to 9-lb. Lots	Larger Lots
Mammoth Sandwich Island .....	3.30	3.20	3.15

<b>SPINACH</b>	2 to 4-lb. Lots	5 to 9-lb. Lots	Larger Lots
New Zealand .....	.70	.66	.63
Norfolk Savoy or Bloomsdale .....	.55	.50	.45
Long Standing Bloomsdale Savoy .....	.57	.52	.47
Virginia Blight Resistant .....	.55	.50	.45

<b>SQUASH or CYMLING</b>	2 to 4-lb. Lots	5 to 9-lb. Lots	Larger Lots
Wood's Earliest Prolific .....	1.45	1.40	1.35
Caserta .....	1.20	1.15	1.10
Early White Bush or Patty Pan .....	1.15	1.10	1.05
Mammoth White Bush .....	1.15	1.10	1.05
Mammoth Yellow Bush .....	1.15	1.10	1.05
Golden Summer Crookneck .....	1.15	1.10	1.05
Early Summer Straightneck .....	1.15	1.10	1.05
Cocozelle or Italian Marrow .....	1.45	1.40	1.35
Warted Hubbard (Winter) .....	1.55	1.50	1.45
Table Queen or Acorn .....	1.20	1.15	1.10



<b>TOMATO</b>	2 to 4-lb. Lots	5 to 9-lb. Lots	Larger Lots
<b>Stokescross No. 4 Hybrid,</b> Oz. \$3.50; ¼ lb. \$10.00; lb. \$20.00.			
Marglobe, Wilt-Resistant, Certified .....	4.25	4.10	4.00
Marglobe, Wilt-Resistant .....	3.75	3.60	3.50
Rutgers, Wilt-Resistant, Certified .....	4.25	4.10	4.00
Rutgers, Wilt-Resistant .....	3.75	3.60	3.50
Break O'Day .....	5.15	5.00	4.90
Oxheart .....	11.50	11.35	11.25
Southland .....	5.65	5.50	5.40
Spark's Earliana .....	5.40	5.25	5.15
Bonnie Best .....	3.75	3.60	3.50
Chalk's Early Jewel .....	3.75	3.60	3.50
June Pink .....	5.85	5.70	5.60
Wood's Improved Ponderosa .....	8.25	8.10	8.00
Wood's Famous Brimmer .....	10.00	9.85	9.75
Stone .....	3.75	3.40	3.30
Greater Baltimore .....	3.75	3.40	3.30
Golden Ponderosa .....	9.25	4.10	9.00
Yellow Plum .....	8.00	7.85	7.75
Yellow Pear .....	8.00	7.85	7.75

<b>TURNIP</b>	2 to 4-lb. Lots	5 to 9-lb. Lots	Larger Lots
Mammoth Purple Top White Globe .....	.70	.65	.62
Improved Purple Top White Globe .....	.75	.70	.67
Early Red or Purple Top Strapleaf .....	.70	.65	.62
Extra Early White Milan .....	1.00	.95	.93
Extra Early Purple Top Milan .....	1.00	.95	.93
Large White Norfolk Globe .....	.70	.65	.62
Pomeranian White Globe .....	.70	.65	.62
Long White Cowhorn .....	.70	.65	.62
White Egg .....	.70	.65	.62
Purple Top Yellow Aberdeen .....	.70	.65	.62
Amber or Yellow Globe .....	.70	.65	.62
Golden Ball or Orange Jelly .....	.70	.65	.62

<b>SALAD VARIETIES</b>	2 to 4-lb. Lots	5 to 9-lb. Lots	Larger Lots
Seven Top .....	.70	.65	.62
Southern Prize .....	.70	.65	.62
Shogoin .....	.70	.65	.62

<b>RUTABAGA or SWEDE</b>	2 to 4-lb. Lots	5 to 9-lb. Lots	Larger Lots
Improved Purple Top Yellow .....	.75	.70	.67
American Purple Top Yellow .....	.70	.65	.62